

*Turning your waste into energy -*

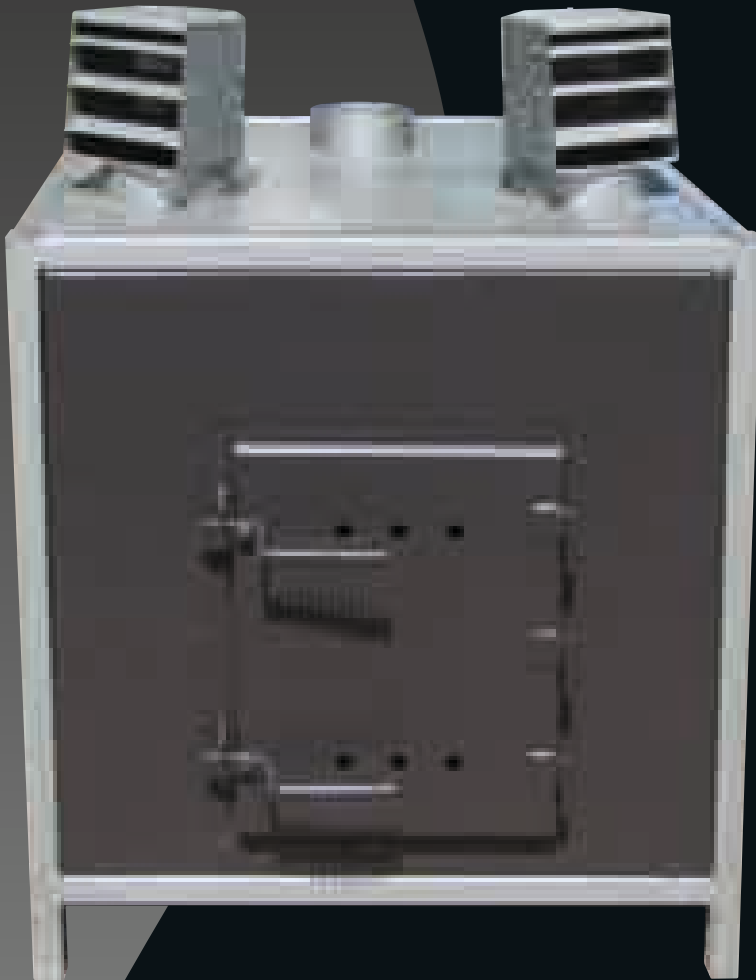
## WT2 Heater Unit

The WT2 is the entry level unit and a very popular choice for the smaller workshop.

The small footprint, ease of installation and being virtually maintenance free make it the obvious choice for workshops up to around 2500ft<sup>2</sup>.

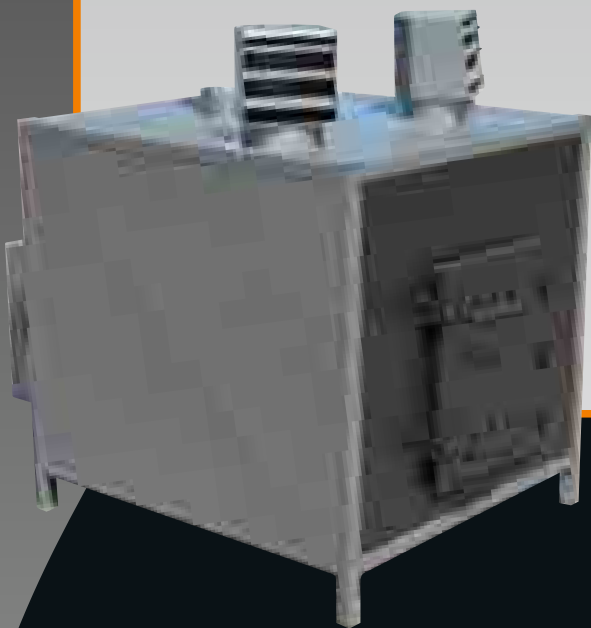
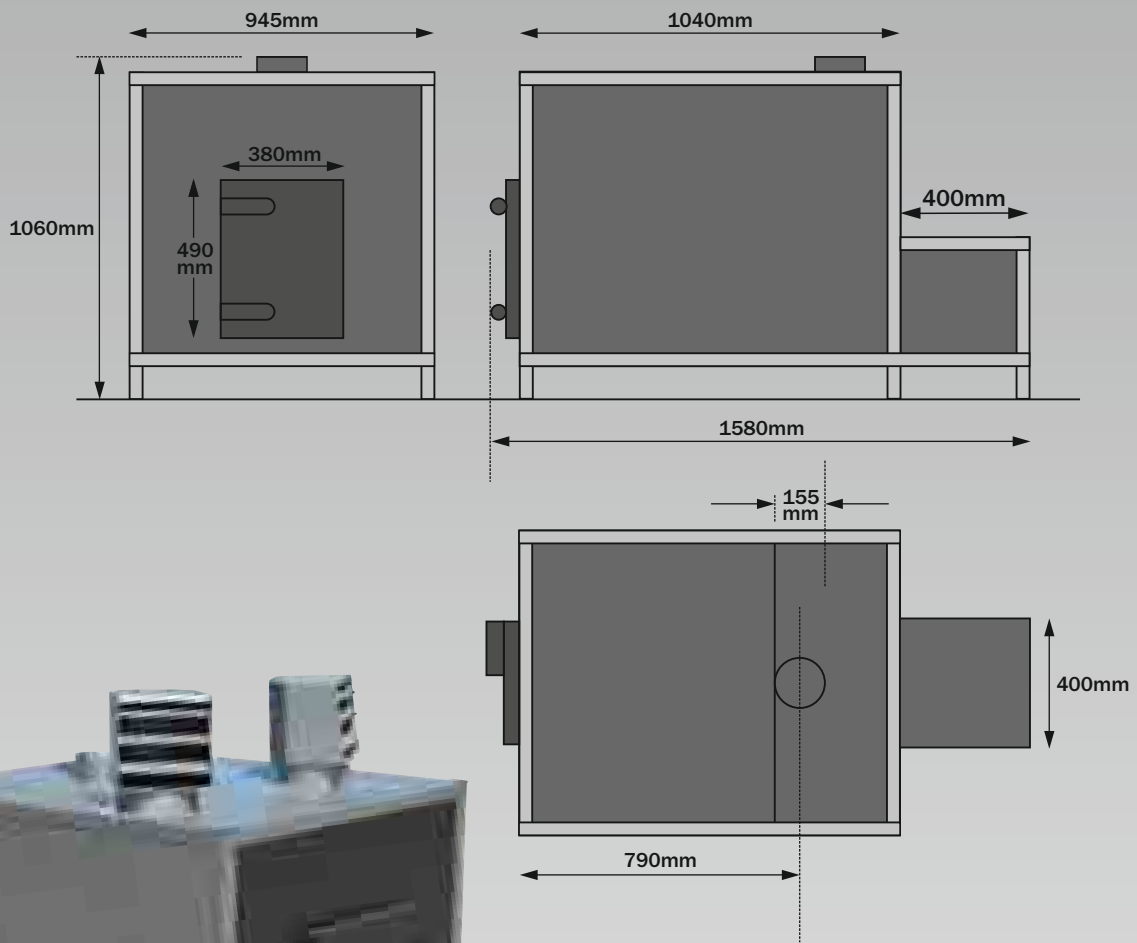
Manufactured using the same high quality materials as the larger WT range of heaters means the customer gets exceptional value without paying through the nose.

The WT2 is thermostatically controlled and will burn approximately 200-350kg per week.



**WOOD WASTE  
TECHNOLOGY**

*The UK's Leading Manufacturer of Wood Waste Heaters*



#### WT2 Heater Specifications

Heat Output	25 Kw/hour – 85,300 Btu/hour
Air Volume	2730 M <sup>3</sup> /hour
Weight	310 Kg



**WOOD WASTE  
TECHNOLOGY**

[info@woodwastetechnology.com](mailto:info@woodwastetechnology.com)

[www.woodwastetechnology.com](http://www.woodwastetechnology.com)

Wood Waste Technology Ltd  
Units 1 and 2 Drummond Road  
Astonfields Industrial Estate  
Stafford ST16 3HJ

Tel: 01785 250400

Fax: 01785 255199

*The UK's Leading Manufacturer of Wood Waste Heaters*